



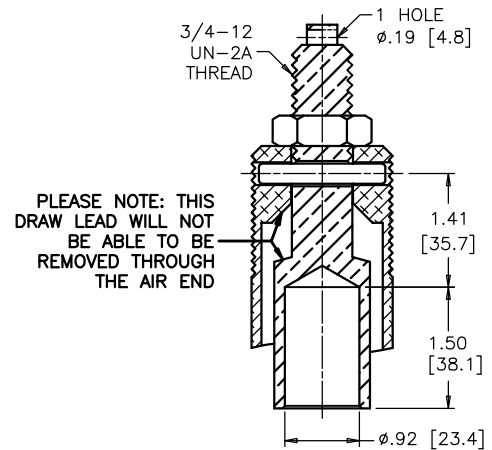
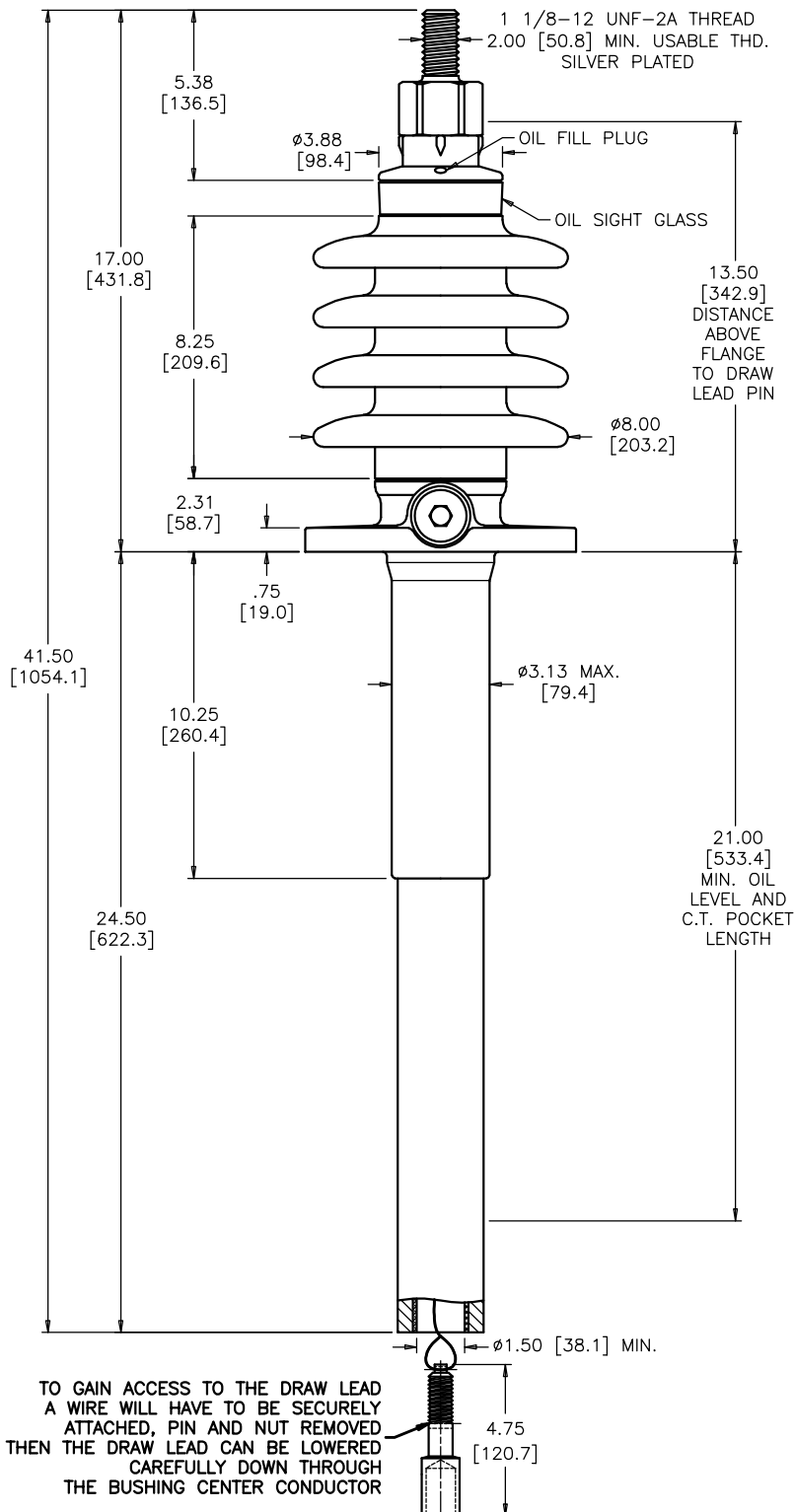
PCORE
ELECTRIC

KV CLASS	15 kv	BIL	110 kv	Uy	10 kv
CURRENT RATING					
600 AMP DRAW LEAD CONNECTION					
MIN. CREEP	21.00 [533.4]	MIN. STRIKE	10.00 [254.0]		
CREEP/L-G	2.42 [61.6]	STD.	IEEE C57.19.00/0		
PCB CONTENT OF OIL IS LESS THAN 1 ppm					

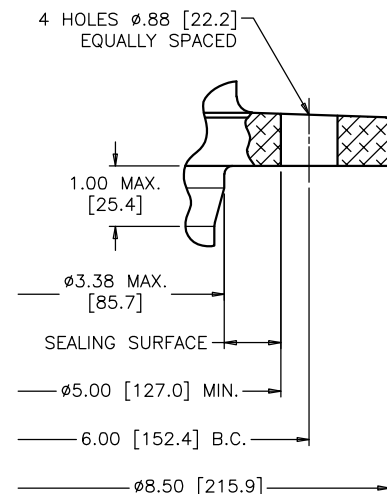
DWG.	CATALOG NUMBER	GLAZE COLOR
SD	B-89183-36	BROWN
SD	B-89183-36-70	LT. GRAY
TITLE		
PRC BUSHING		
CRIMP STYLE DRAW LEAD AS SPECIFIED BY CUSTOMER		

DATE	1-5-18	REV. DATE	2-9-21
MAXIMUM ALTITUDE	10000 ft [3000 m]		
NET WEIGHT	35 lb [16 kg]		
ANGLE OF INCLINATION FROM THE VERTICAL	0° TO 70°		

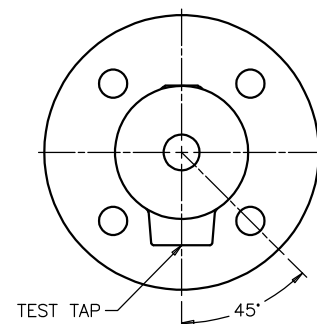
NOTE: ACTUAL DRAW-LEAD CURRENT RATING IS DETERMINED BY CABLE SIZE



DRAW LEAD ASSEMBLY



MOUNTING FLANGE DETAIL



FLANGE ALIGNMENT DIAGRAM TOP VIEW

DIMENSIONS IN INCHES [MILLIMETERS]

REVISION ADDED AS SPECIFIED BY CUSTOMER TO TITLE

SCALE 1/4

NOTE TO PURCHASER:
ALL SALES OF PCORE PRODUCTS ARE SUBJECT
TO OUR STANDARD TERMS AND CONDITIONS
AND THE LIMITED WARRANTIES THEREUNDER